






GREEN SERIES BATTERY CHARGERS



SUMMARY

- **MAIN CHARACTERISTICS**
- **GREEN2**
- **GREEN4**
- **GREEN6**
- **GREEN8**
- **GREENX**
- **GREEN SERIES – COMMON FEATURES**
- **GREEN SERIES - OPTIONALS**

MAIN CHARACTERISTICS (1)

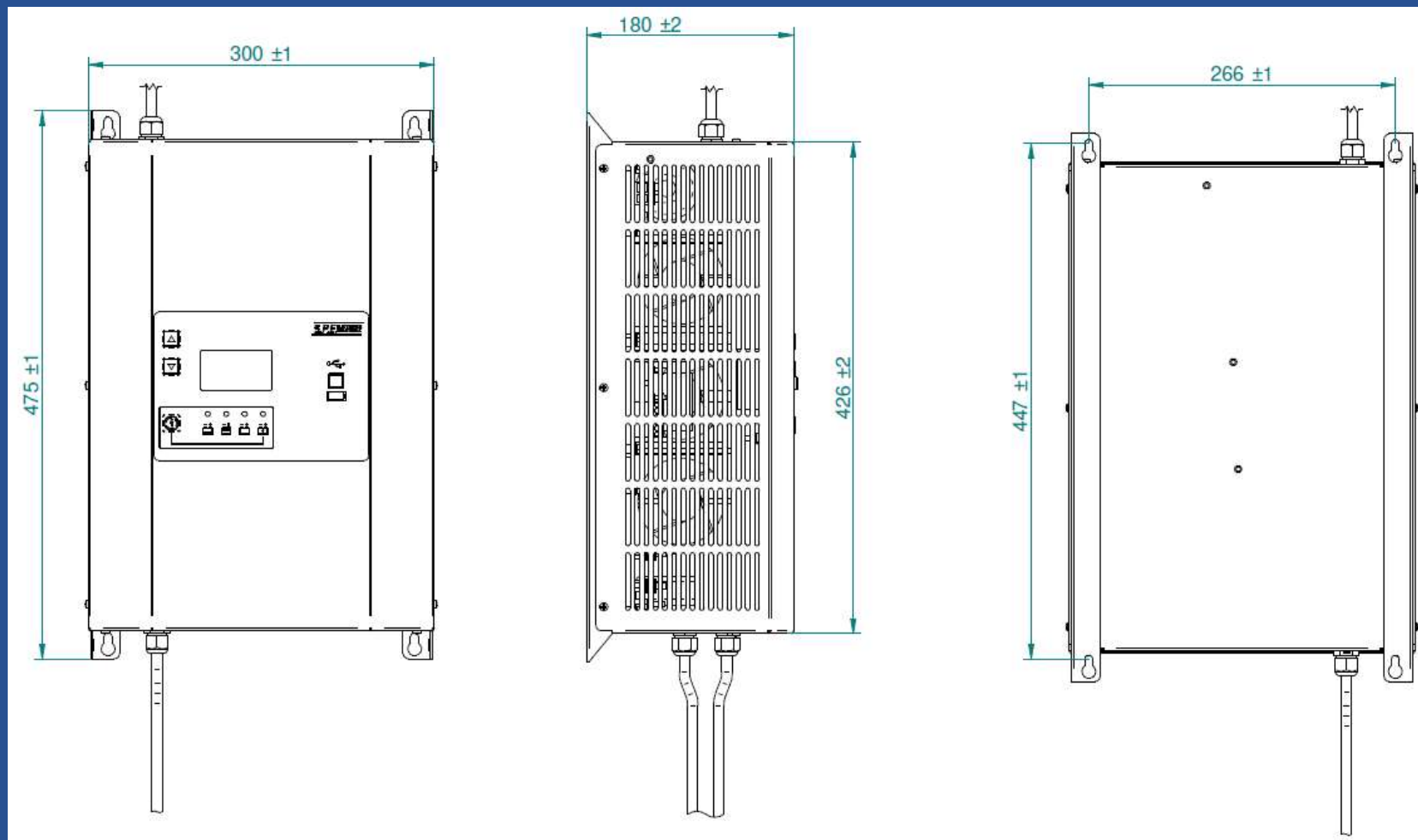
GREEN2	GREEN4	GREEN6	GREEN8	GREENX
				
Single-phase battery chargers with active PFC		Modular three-phase battery chargers		
120/200-240VAC – 50-60 Hz	200-240VAC – 50-60Hz	200/208-240 400/440/480/600 Vac – 50-60 Hz	200/208-240 400/440/480/600 Vac – 50-60 Hz	400/440/480/600 Vac – 50-60 Hz
Nom.Batt/MaxAmp 24V → 70A 36V → 45A 48V → 40A 72V → 25A 80V → 20A 96V → 17A	Nom.Batt/MaxAmp 24V → 120A 36V → 90A 48V → 75A 72V → 50A 80V → 40A 96V → 35A	Nom.Batt/MaxAmp 24V → 150A 36V → 150A 48V → 150A 72V → 100A 80V → 100A 96V → 75A	Nom.Batt/MaxAmp 24V → 200A 36V → 200A 48V → 200A 72V → 130A 80V → 130A 96V → 100A	Nom.Batt/MaxAmp 24V → 300A 36V → 300A 48V → 300A 72V → 200A 80V → 200A 96V → 150A

MAIN CHARACTERISTICS ⁽²⁾

GREEN2	GREEN4	GREEN6	GREEN8	GREENX
Suitable for Lead-Acid, Sealed and Gel Traction batteries				
Multi current configuration - Various configurations available				
HFView software included - Programmable via front panel or USB type A/B port				
Customizable charging curves through software				
Integrated data logger				
CAN/CAN-open BUS communication for Lithium batteries				

GREEN2 ⁽¹⁾

DIMENSIONS (LxWxH): 300x475x180 mm – 11.81x18.70x7.09 in.
WEIGHT: 11 Kg – 24.25 lbs - PROTECTION GRADE IP20



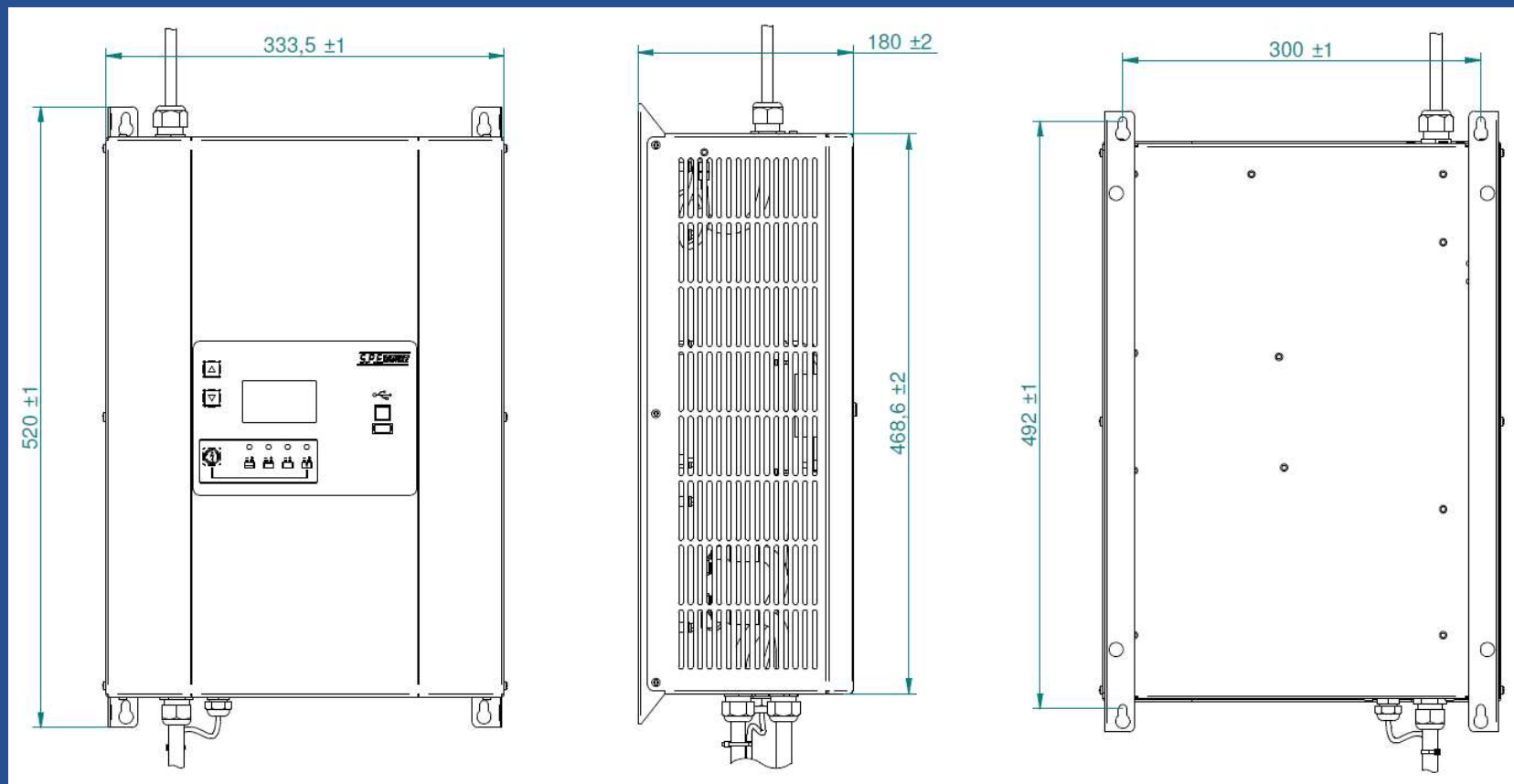
GREEN2 (2)

Battery Voltage	IULa Wet 8h Range (C5)	IULa Wet 12h Range (C5)	IULa Gel PzV 10-14h Range (C5)	Charging Current	Model
24V	280 ÷ 340 Ah	450 ÷ 550 Ah	350 ÷ 420 Ah	50A	24-50
	340 ÷ 410 Ah	540 ÷ 660 Ah	420 ÷ 510 Ah	60A	24-60
	390 ÷ 480 Ah	630 ÷ 770 Ah	480 ÷ 590 Ah	70A	24-70
36V	230 ÷ 280 Ah	360 ÷ 440 Ah	275 ÷ 340 Ah	40A	36-40
	250 ÷ 310 Ah	410 ÷ 500 Ah	310 ÷ 380 Ah	45A	36-45
48V	170 ÷ 210 Ah	270 ÷ 330 Ah	210 ÷ 255 Ah	30A	48-30
	230 ÷ 280 Ah	360 ÷ 440 Ah	275 ÷ 340 Ah	40A	48-40
72V	140 ÷ 170 Ah	230 ÷ 280 Ah	175 ÷ 210 Ah	25A	72-25
80V	110 ÷ 140 Ah	180 ÷ 220 Ah	140 ÷ 170 Ah	20A	80-20
96V	100 ÷ 120 Ah	155 ÷ 190 Ah	115 ÷ 145 Ah	17A	96-17

GREEN4 ⁽¹⁾

DIMENSIONS (LxWxH): 333.50x520x180 mm - 13.13x20.47x7.09 in.

WEIGHT: 13 Kg – 28.66 lbs - PROTECTION GRADE IP20



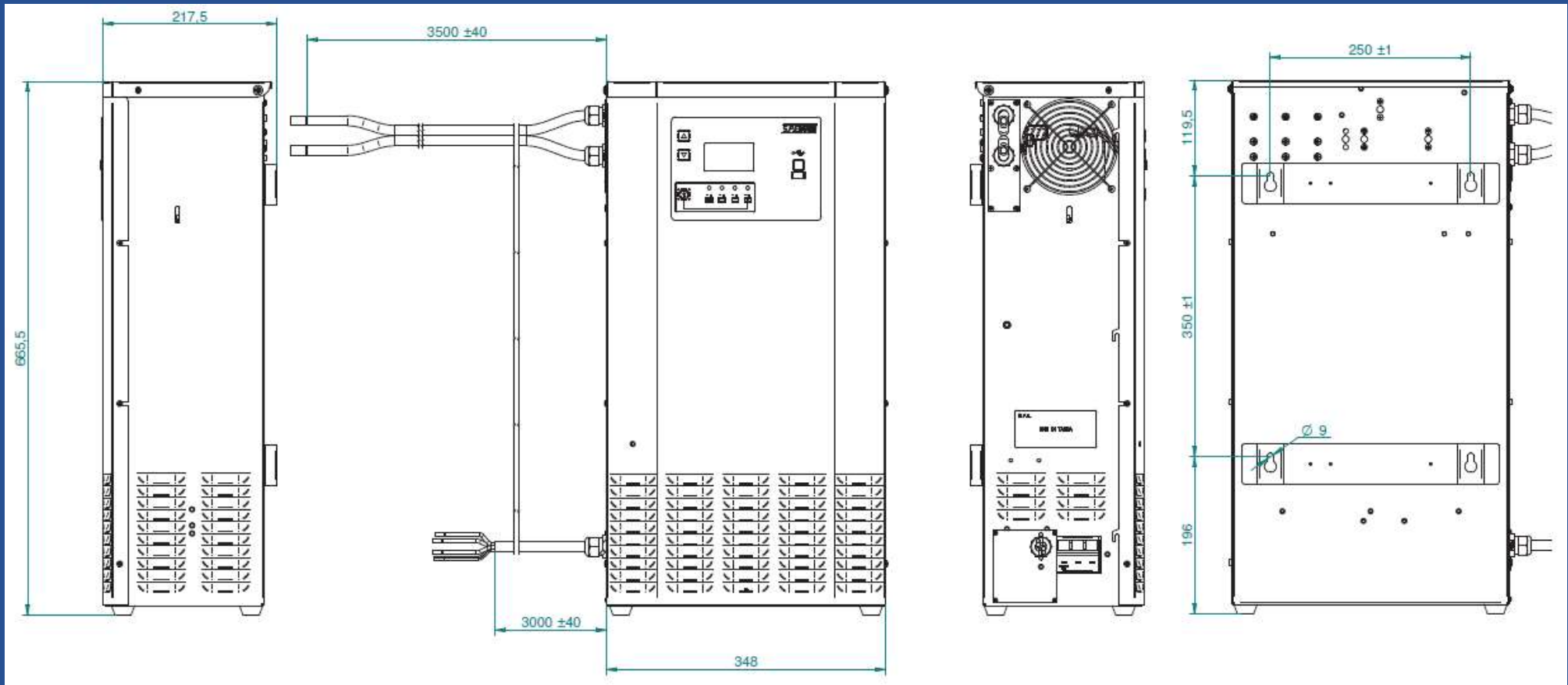
GREEN4 (2)

Battery Voltage	IULa Wet 8h Range (C5)	IULa Wet 12h Range (C5)	IULa Gel PzV 10-14h Range (C5)	Charging Current	Model
24V	450 ÷ 550 Ah	720 ÷ 880 Ah	550 ÷ 680 Ah	80A	24-80
	510 ÷ 620 Ah	810 ÷ 990 Ah	620 ÷ 760 Ah	90A	24-90
	560 ÷ 690 Ah	900 ÷ 1100 Ah	690 ÷ 850 Ah	100A	24-100
	680 ÷ 830 Ah	1080 ÷ 1320 Ah	830 ÷ 1020 Ah	120A	24-120
36V	280 ÷ 340 Ah	450 ÷ 550 Ah	350 ÷ 420 Ah	50A	36-50
	340 ÷ 410 Ah	540 ÷ 660 Ah	420 ÷ 510 Ah	60A	36-60
	390 ÷ 480 Ah	630 ÷ 770 Ah	480 ÷ 590 Ah	70A	36-70
	450 ÷ 550 Ah	720 ÷ 880 Ah	550 ÷ 680 Ah	80A	36-80
	510 ÷ 620 Ah	810 ÷ 990 Ah	620 ÷ 760 Ah	90A	36-90
48V	280 ÷ 340 Ah	450 ÷ 550 Ah	350 ÷ 420 Ah	50A	48-50
	340 ÷ 410 Ah	540 ÷ 660 Ah	420 ÷ 510 Ah	60A	48-60
	420 ÷ 520 Ah	680 ÷ 830 Ah	520 ÷ 630 Ah	75A	48-75
72V	170 ÷ 210 Ah	270 ÷ 330 Ah	210 ÷ 255 Ah	30A	72-30
	230 ÷ 280 Ah	360 ÷ 440 Ah	275 ÷ 340 Ah	40A	72-40
	280 ÷ 340 Ah	450 ÷ 550 Ah	350 ÷ 420 Ah	50A	72-50
80V	170 ÷ 210 Ah	270 ÷ 330 Ah	210 ÷ 255 Ah	30A	80-30
	230 ÷ 280 Ah	360 ÷ 440 Ah	275 ÷ 340 Ah	40A	80-40
96V	140 ÷ 170 Ah	230 ÷ 280 Ah	175 ÷ 210 Ah	25A	96-25
	170 ÷ 210 Ah	270 ÷ 330 Ah	210 ÷ 255 Ah	30A	96-30
	200 ÷ 240 Ah	315 ÷ 380 Ah	240 ÷ 300 Ah	35A	96-35

GREEN6 ⁽¹⁾

DIMENSIONS (LxWxH): 348x665,50x217,5 mm - 13.70x26.20x8.56 in.

WEIGHT: 35 Kg - 77.16 lbs - PROTECTION GRADE IP20



GREEN6 (2)

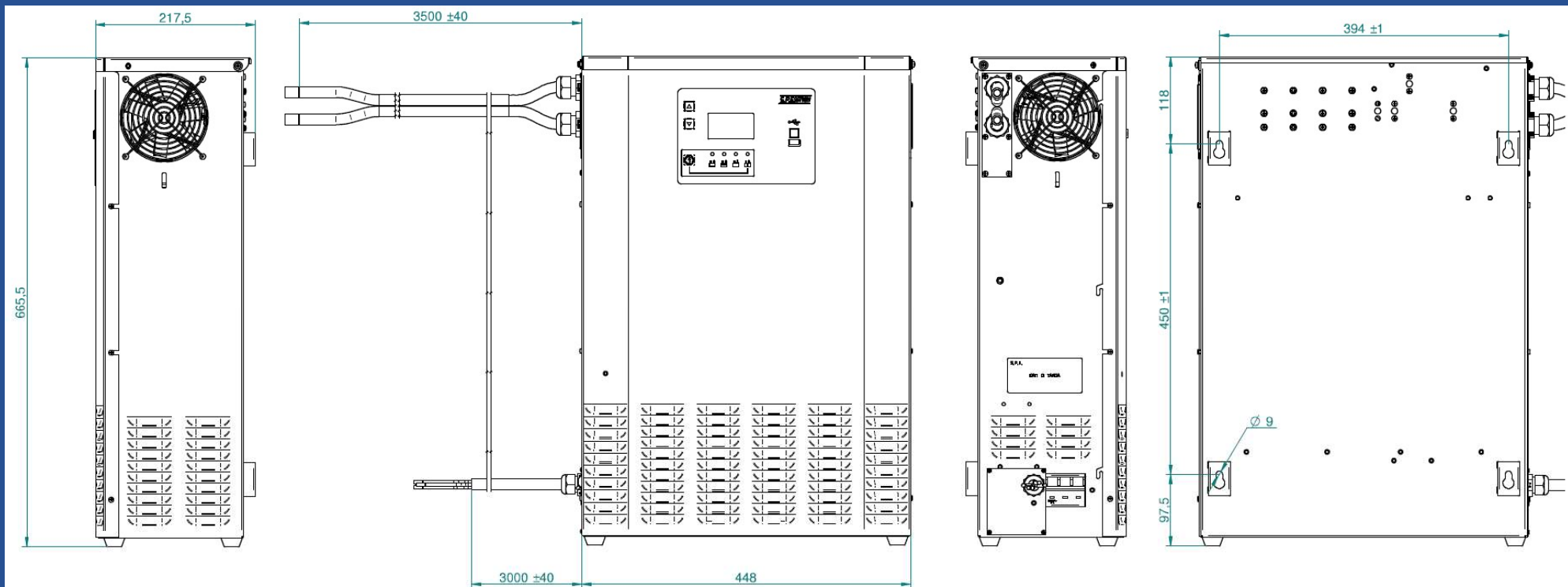
Battery Voltage	IUIa Wet 8h Range (C5)	IUIa Wet 12h Range (C5)	IUIa Gel PzV 10-14h Range (C5)	Charging Current	Model
24V	280 ÷ 340 Ah	450 ÷ 550 Ah	350 ÷ 420 Ah	50A	24-50
	340 ÷ 410 Ah	540 ÷ 660 Ah	420 ÷ 510 Ah	60A	24-60
	390 ÷ 480 Ah	630 ÷ 770 Ah	480 ÷ 590 Ah	70A	24-70
	450 ÷ 550 Ah	720 ÷ 880 Ah	550 ÷ 680 Ah	80A	24-80
	560 ÷ 690 Ah	900 ÷ 1100 Ah	690 ÷ 850 Ah	100A	24-100
	680 ÷ 830 Ah	1080 ÷ 1320 Ah	830 ÷ 1020 Ah	120A	24-120
	840 ÷ 1030 Ah	1350 ÷ 1650 Ah	1040 ÷ 1270 Ah	150A	24-150
36V	280 ÷ 340 Ah	450 ÷ 550 Ah	350 ÷ 420 Ah	50A	36-50
	340 ÷ 410 Ah	540 ÷ 660 Ah	420 ÷ 510 Ah	60A	36-60
	390 ÷ 480 Ah	630 ÷ 770 Ah	480 ÷ 590 Ah	70A	36-70
	450 ÷ 550 Ah	720 ÷ 880 Ah	550 ÷ 680 Ah	80A	36-80
	560 ÷ 690 Ah	900 ÷ 1100 Ah	690 ÷ 850 Ah	100A	36-100
	680 ÷ 830 Ah	1080 ÷ 1320 Ah	830 ÷ 1020 Ah	120A	36-120
	840 ÷ 1030 Ah	1350 ÷ 1650 Ah	1040 ÷ 1270 Ah	150A	36-150
48V	280 ÷ 340 Ah	450 ÷ 550 Ah	350 ÷ 420 Ah	50A	48-50
	340 ÷ 410 Ah	540 ÷ 660 Ah	420 ÷ 510 Ah	60A	48-60
	390 ÷ 480 Ah	630 ÷ 770 Ah	480 ÷ 590 Ah	70A	48-70
	450 ÷ 550 Ah	720 ÷ 880 Ah	550 ÷ 680 Ah	80A	48-80
	560 ÷ 690 Ah	900 ÷ 1100 Ah	690 ÷ 850 Ah	100A	48-100
	680 ÷ 830 Ah	1080 ÷ 1320 Ah	830 ÷ 1020 Ah	120A	48-120
	730 ÷ 890 Ah	1170 ÷ 1430 Ah	900 ÷ 1100 Ah	130A	48-130
	840 ÷ 1030 Ah	1350 ÷ 1650 Ah	1040 ÷ 1270 Ah	150A	48-150

GREEN6 (3)

Battery Voltage	IUIa Wet 8h Range (C5)	IUIa Wet 12h Range (C5)	IUIa Gel PzV 10-14h Range (C5)	Charging Current	Model
72V	170 ÷ 210 Ah	270 ÷ 330 Ah	210 ÷ 255 Ah	30A	72-30
	230 ÷ 280 Ah	360 ÷ 440 Ah	275 ÷ 340 Ah	40A	72-40
	280 ÷ 340 Ah	450 ÷ 550 Ah	350 ÷ 420 Ah	50A	72-50
	340 ÷ 410 Ah	540 ÷ 660 Ah	420 ÷ 510 Ah	60A	72-60
	450 ÷ 550 Ah	720 ÷ 880 Ah	550 ÷ 680 Ah	80A	72-80
	560 ÷ 690 Ah	900 ÷ 1100 Ah	690 ÷ 850 Ah	100A	72-100
80V	170 ÷ 210 Ah	270 ÷ 330 Ah	210 ÷ 255 Ah	30A	80-30
	230 ÷ 280 Ah	360 ÷ 440 Ah	275 ÷ 340 Ah	40A	80-40
	280 ÷ 340 Ah	450 ÷ 550 Ah	350 ÷ 420 Ah	50A	80-50
	340 ÷ 410 Ah	540 ÷ 660 Ah	420 ÷ 510 Ah	60A	80-60
	450 ÷ 550 Ah	720 ÷ 880 Ah	550 ÷ 680 Ah	80A	80-80
	560 ÷ 690 Ah	900 ÷ 1100 Ah	690 ÷ 850 Ah	100A	80-100
96V	110 ÷ 140 Ah	180 ÷ 220 Ah	140 ÷ 170 Ah	20A	96-20
	140 ÷ 170 Ah	230 ÷ 280 Ah	170 ÷ 210 Ah	25A	96-25
	170 ÷ 210 Ah	270 ÷ 330 Ah	210 ÷ 250 Ah	30A	96-30
	230 ÷ 280 Ah	360 ÷ 440 Ah	280 ÷ 340 Ah	40A	96-40
	280 ÷ 340 Ah	450 ÷ 550 Ah	350 ÷ 420 Ah	50A	96-50
	340 ÷ 410 Ah	540 ÷ 660 Ah	420 ÷ 510 Ah	60A	96-60
	390 ÷ 480 Ah	630 ÷ 770 Ah	480 ÷ 590 Ah	70A	96-70
	420 ÷ 520 Ah	680 ÷ 830 Ah	520 ÷ 630 Ah	75A	96-75

GREEN8 ⁽¹⁾

DIMENSIONS (LxWxH): 448x665,50x217,5 mm – 19,45x26.20x8.5 in.
WEIGHT: 43,35 Kg – 95.5 lbs - PROTECTION GRADE IP20

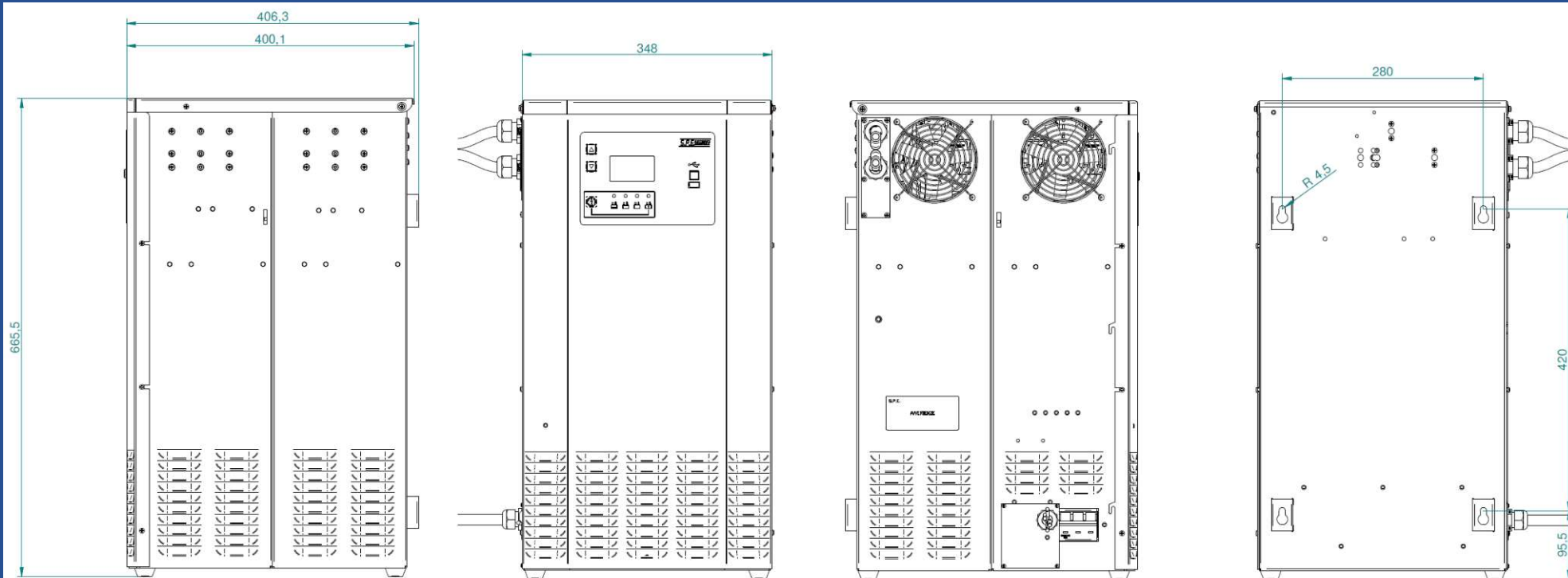


GREEN8 (2)

Battery Voltage	IUIa Wet 8h Range (C5)	IUIa Wet 12h Range (C5)	IUIa Gel PzV 10-14h Range (C5)	Charging Current	Model
24V	900 ÷ 1100 Ah	1440 ÷ 1760 Ah	1110 ÷ 1350 Ah	160A	24-160
	1010 ÷ 1240 Ah	1620 ÷ 1980 Ah	1250 ÷ 1520 Ah	180A	24-180
	1130 ÷ 1380 Ah	1800 ÷ 2200 Ah	1380 ÷ 1690 Ah	200A	24-200
36V	900 ÷ 1100 Ah	1440 ÷ 1760 Ah	1110 ÷ 1350 Ah	160A	36-160
	1010 ÷ 1240 Ah	1620 ÷ 1980 Ah	1250 ÷ 1520 Ah	180A	36-180
	1130 ÷ 1380 Ah	1800 ÷ 2200 Ah	1380 ÷ 1690 Ah	200A	36-200
48V	900 ÷ 1100 Ah	1440 ÷ 1760 Ah	1110 ÷ 1350 Ah	160A	48-160
	1010 ÷ 1240 Ah	1620 ÷ 1980 Ah	1250 ÷ 1520 Ah	180A	48-180
	1130 ÷ 1380 Ah	1800 ÷ 2200 Ah	1380 ÷ 1690 Ah	200A	48-200
72V	620 ÷ 760 Ah	990 ÷ 1210 Ah	760 ÷ 930 Ah	110A	72-110
	680 ÷ 830 Ah	1080 ÷ 1320 Ah	830 ÷ 1020 Ah	120A	72-120
	730 ÷ 890 Ah	1170 ÷ 1430 Ah	900 ÷ 1100 Ah	130A	72-130
80V	620 ÷ 760 Ah	990 ÷ 1210 Ah	760 ÷ 930 Ah	110A	80-110
	680 ÷ 830 Ah	1080 ÷ 1320 Ah	830 ÷ 1020 Ah	120A	80-120
	730 ÷ 890 Ah	1170 ÷ 1430 Ah	900 ÷ 1100 Ah	130A	80-130
96V	450 ÷ 550 Ah	720 ÷ 880 Ah	550 ÷ 680 Ah	80A	96-80
	560 ÷ 690 Ah	900 ÷ 1100 Ah	690 ÷ 850 Ah	100A	96-100

GREENX ⁽¹⁾

DIMENSIONS (LxWxH): 348x665,50x400,10 mm - 13.70x26.20x15.75 in.
WEIGHT: 61 Kg – 134.48 lbs - PROTECTION GRADE IP20

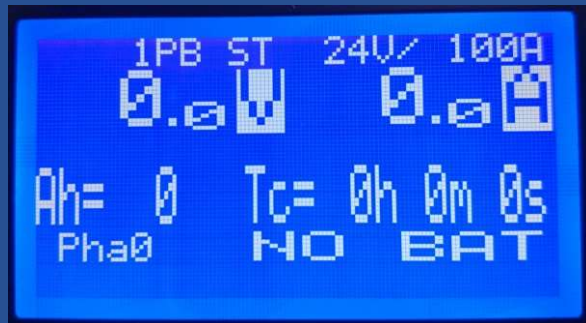


GREENX (2)

Battery Voltage	IUIa Wet 8h Range (C5)	IUIa Wet 12h Range (C5)	IUIa Gel PzV 10-14h Range (C5)	Charging Current	Model
24V	1240 ÷ 1510 Ah	1980 ÷ 2420 Ah	1520 ÷ 1860 Ah	220A	24-220
	1410 ÷ 1720 Ah	2250 ÷ 2750 Ah	1730 ÷ 2120 Ah	250A	24-250
	1580 ÷ 1930 Ah	2520 ÷ 3080 Ah	1940 ÷ 2370 Ah	280A	24-280
	1690 ÷ 2060 Ah	2700 ÷ 3300 Ah	2080 ÷ 2540 Ah	300A	24-300
36V	1240 ÷ 1510 Ah	1980 ÷ 2420 Ah	1520 ÷ 1860 Ah	220A	36-220
	1410 ÷ 1720 Ah	2250 ÷ 2750 Ah	1730 ÷ 2120 Ah	250A	36-250
	1580 ÷ 1930 Ah	2520 ÷ 3080 Ah	1940 ÷ 2370 Ah	280A	36-280
	1690 ÷ 2060 Ah	2700 ÷ 3300 Ah	2080 ÷ 2540 Ah	300A	36-300
48V	1240 ÷ 1510 Ah	1980 ÷ 2420 Ah	1520 ÷ 1860 Ah	220A	48-220
	1410 ÷ 1720 Ah	2250 ÷ 2750 Ah	1730 ÷ 2120 Ah	250A	48-250
	1580 ÷ 1930 Ah	2520 ÷ 3080 Ah	1940 ÷ 2370 Ah	280A	48-280
	1690 ÷ 2060 Ah	2700 ÷ 3300 Ah	2080 ÷ 2540 Ah	300A	48-300
72V	840 ÷ 1030 Ah	1350 ÷ 1650 Ah	1040 ÷ 1270 Ah	150A	72-150
	900 ÷ 1100 Ah	1440 ÷ 1760 Ah	1110 ÷ 1350 Ah	160A	72-160
	1010 ÷ 1240 Ah	1620 ÷ 1980 Ah	1250 ÷ 1520 Ah	180A	72-180
	1130 ÷ 1380 Ah	1800 ÷ 2200 Ah	1380 ÷ 1690 Ah	200A	72-200
80V	840 ÷ 1030 Ah	1350 ÷ 1650 Ah	1040 ÷ 1270 Ah	150A	80-150
	900 ÷ 1100 Ah	1440 ÷ 1760 Ah	1110 ÷ 1350 Ah	160A	80-160
	1010 ÷ 1240 Ah	1620 ÷ 1980 Ah	1250 ÷ 1520 Ah	180A	80-180
	1130 ÷ 1380 Ah	1800 ÷ 2200 Ah	1380 ÷ 1690 Ah	200A	80-200
96V	700 ÷ 860 Ah	1130 ÷ 1380 Ah	870 ÷ 1060 Ah	125A	96-125
	840 ÷ 1030 Ah	1350 ÷ 1650 Ah	1040 ÷ 1270 Ah	150A	96-150

GREEN SERIES – COMMON FEATURES ⁽¹⁾

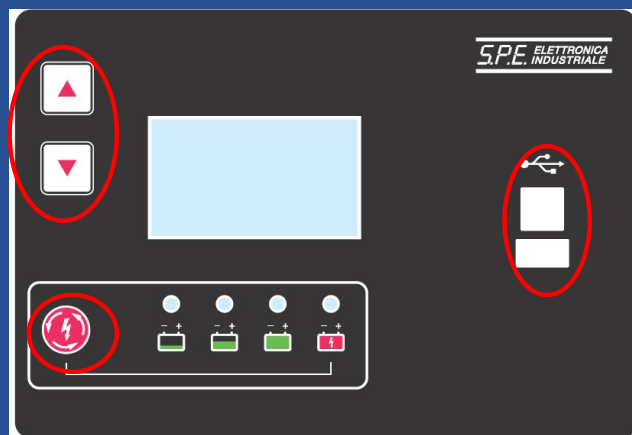
SPE206 Board



Navigation
Buttons



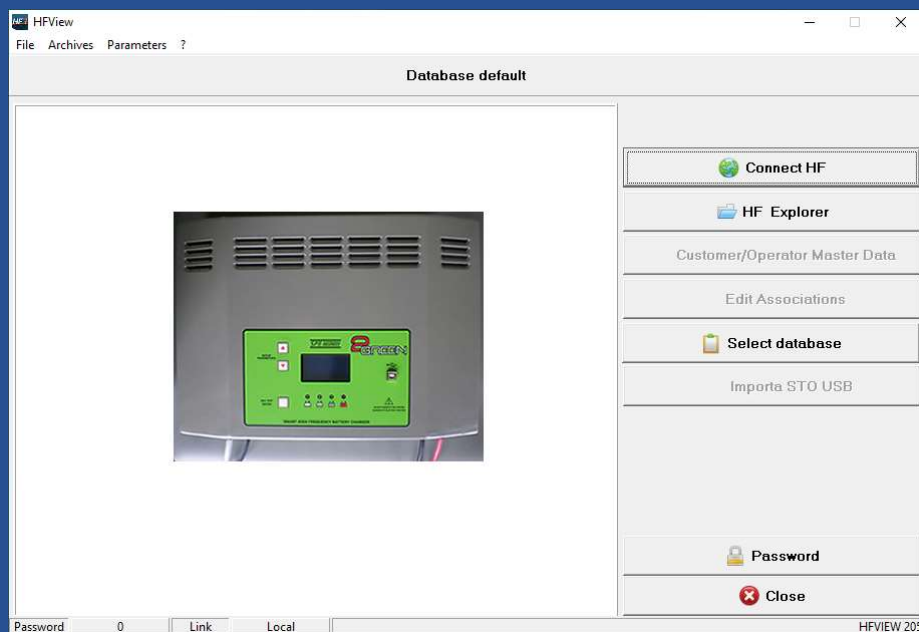
Enter
(STOP/RESTART)



- All the chargers of the GREEN Series are equipped with SPE206 Board.
- On all the chargers of the GREEN Series the SPE206 Board maintains the same interface and the same functionality:
 - Alphanumeric display,
 - Navigation Pushbuttons,
 - Enter (STOP/RESTART) pushbutton,
 - USB Port Type A for firmware update and curves/parameters setting through USB pen Drive,
 - USB Port B for curve/parameter setting, monitor of the charging process and data download through the PC application HFView.
- **IMPORTANT:** the SPE206 Board mounted on the chargers of the GREEN Series has the same functionality but not an unique ordering number. The boards differ based on charger model, I/O ratings and battery voltage.

GREEN SERIES – COMMON FEATURES (2)

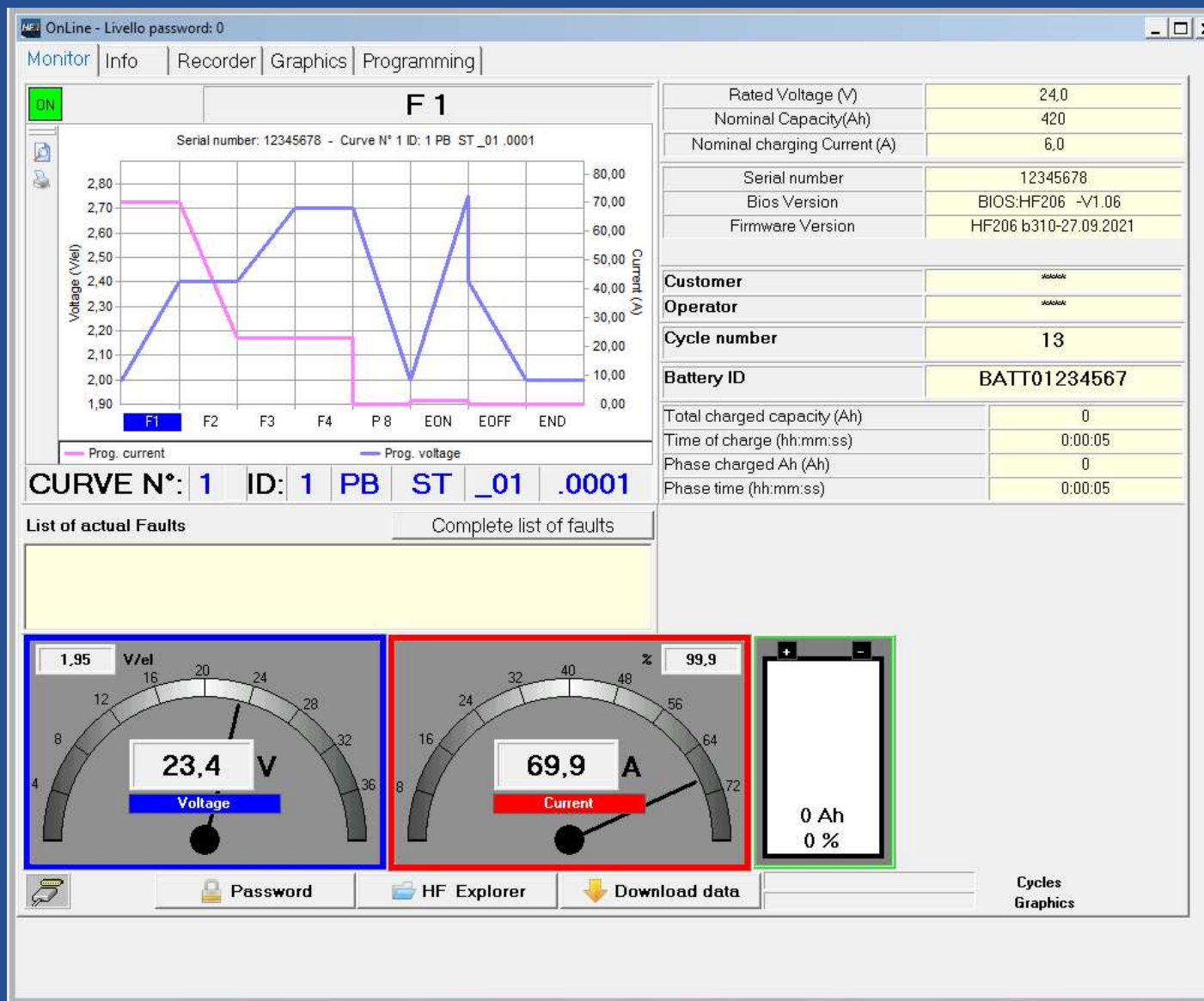
HFView Application



- The PC application HF-View allows an easy connection between a GREEN charger and a PC.
- It's enough an USB Cable type A/type B. None drivers need to be installed to allow the recognition of the charger from the PC.
- The HFView application provides a user-friendly interface to allow: the monitor of the charging process, the download of the data correlated to the last charging cycles executed and to check in detail the charger parameters and the charging curve implemented.
- Only for expert users the HFView Application allow to:
 - Change the output ratings of the charger.
 - Change the charging curve choosing between 8 pre-programmed curves.
 - Change the functioning of each of the 8 pre-programmed charging curves.

GREEN SERIES – COMMON FEATURES (3)

HFView Application



GREEN SERIES – COMMON FEATURES (4)

HFView Application

OnLine - Livello password: 0

Monitor | Info | Recorder | Graphics | Programming

EDIT SEND

Curva 1
Curva 2
Curva 3
Curva 4
Curva 5
Curva 6
Curva 7
Curva 8

Save Default Export Import

Param. Spec. Func. Phases Curves 1 (V) (V/el)

< General | Timer 1-5 > < Curves Fix Param. | Fix Spec

Battery Voltage Parameters

Type of Battery: 0-Pb

Element Ret. Volt: 2.00 (V)

Max Control Volt: 2.80 (V/el)

☐ Start without battery (F0 - F1)

☐ Enable Rated Voltage Variation

Number Battery Elements: 12

Battery Rated Voltage: 24 (V)

Battery Current Parameters

☐ Enable Nominal Current Variation

Nominal charging Current: 70.0 (A)

Proportional time calculation

Tprop: 0-OFF

Tmin: (hh)

Tmax: (hh)

Enable calc.: ☐ F1 ☐ F2 ☐ F3 ☐ F4 ☐ F5 ☐ F6 ☐ F7

Proportional time calc. ratio: (hh)

TSIC Fault indication: ☐ Off ☒ On

Ahprop: 0-OFF

Ah Max: ☐ Off ☐ (%)

dVTF (4 samples): ☐ Off ☒ 20 / 20 = 80/80 (mV/el / min)

Reset for mains missing: ☐ Off ☒ On

F8 - Pause time at the end of charge: 1.00 (hh:mm)

F9/F12 - Number of pulse per day: ☐ Off ☒ 6 (N/24h) ☐ ∞ 0 C/Sk

F9 - Min Time of first charge to equilibize: ☐ Off ☒ 3 (hh)

(Skip Equalization on, if F1 phase charging time < Tskip)

F9 - Equaliz. Pulse Ton: 10 (min)

F9 - Equaliz. V lim: ☐ Off ☒ 2.75 (V/el)

F9 - Equaliz. I ref: 14.0 (A) ☒ Zero current contrast

F10 - Equaliz. Pulse Toff: 50 (min)

F11 - Equaliz. Cycle Time: 6 (hh)

(Time in hours of current equalization)

F12 - Pause time to repeat eq: ☐ Off ☒ 72 (hh)

(Pause in hours for repeating current equalization)

F8/F10/F11/F12 - Vmin to Restart Eq: ☐ Off ☒ 2.05 (V/el)

F13 - Float Charge: ☒ Off ☐ (hh) ☐ ∞

F13 - Vref Float Charge: 2.28 (V/el)

F13 - Iref Float Charge: ☒ Off ☐ (A) ☐ Zero current contrast

GREEN SERIES – COMMON FEATURES (5)

HFView Application

OnLine - Livello password: 0

Monitor | Info | Recorder | Graphics | Programming

EDIT | SEND | Curva 1 | Save | Default | Export | Import

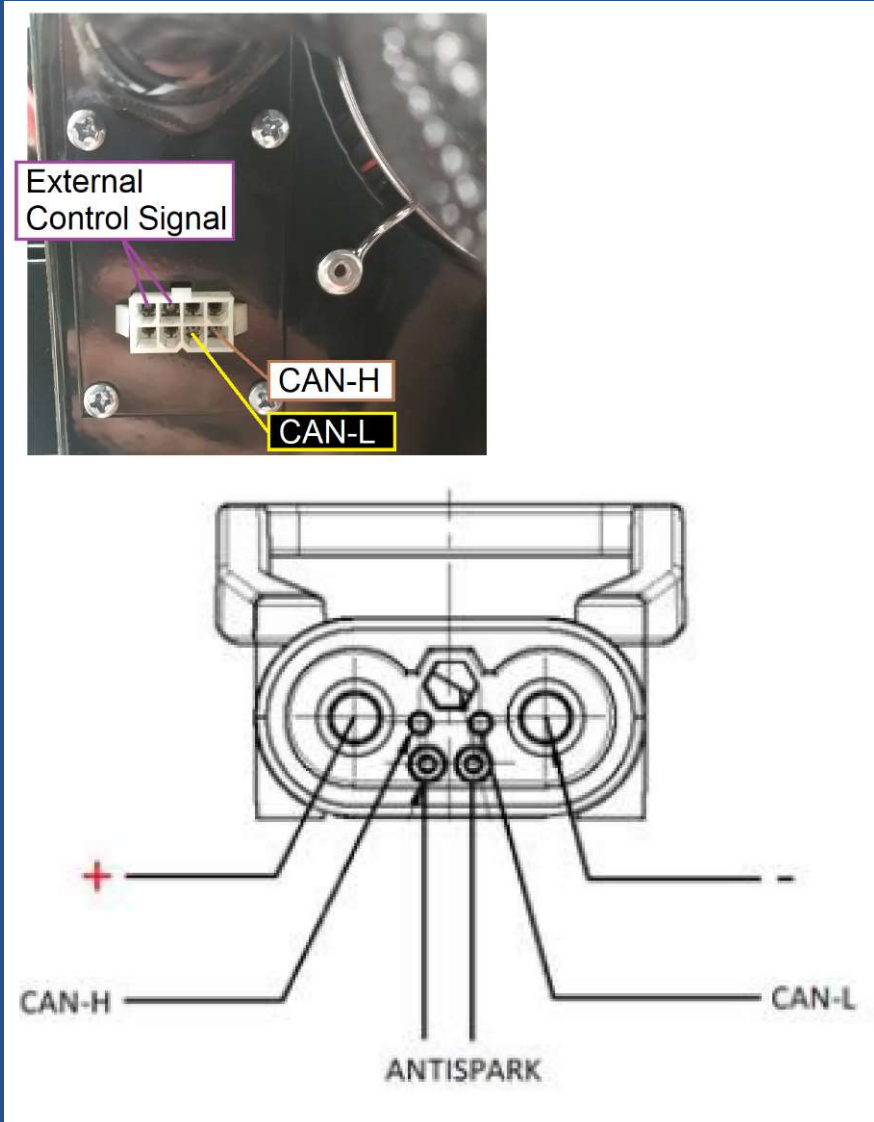
1 PB ST_01 .0001

< General | Timer 1-5 > | < Curves Fix Param. | Fix Special Funct. | Curves 1 - 8 Phase Param. | Spec. Func. Phases Curves 1 | (V) (V/el)

	START	PHASE 1	PHASE 2	PHASE 3	PHASE 4
Test		1-I-Direct Currer	2-U-Constant Vc	1-I-Direct Currer	2-U-Constant Vc
Vref (V/el)		0.00	2.40	0.00	2.70
Vmin (V/el)	1.00	0.00	0.00	0.00	0.00
Vmax (V/el)	2.30	2.40	0.00	2.70	0.00
Iref (A)		70.0	0.0	22.8	22.8
Imin (A)	0.0	0.0	22.8	0.0	0.0
Imax (A)	0.0	0.0	75.0	0.0	0.0
Tref (h.m.s)	0:00:05	9:00:00	3:00:00	3:00:00	0:30:00
TbRef (NTC)					
Condit1	14-T>=Tref	4-V>=Vmax	7-I<Imin	4-V>=Vmax	0-OFF
Next C1	1-PHASE1	2-PHASE2	3-PHASE3	4-PHASE4	
Condit2	0-OFF	0-OFF	14-T>=Tref	14-T>=Tref	14-T>=Tref
Next C2			3-PHASE3	8-PAUSE	8-PAUSE
Condit3	0-OFF	0-OFF	10-I>=Imax	19-dV/dT<dVTF	0-OFF
Next C3			1-PHASE1	8-PAUSE	
Condit4	0-OFF	0-OFF	0-OFF	0-OFF	0-OFF
Next C4					
Condit5	0-OFF	0-OFF	0-OFF	0-OFF	0-OFF
Next C5					
Condit6	0-OFF	0-OFF	0-OFF	0-OFF	0-OFF
Next C6					
Cond ALL 1	0-OFF	14-T>=Tref	0-OFF	0-OFF	0-OFF
Next Call1		15.STOP AL			
Cond ALL 2	0-OFF	0-OFF	0-OFF	0-OFF	0-OFF
Next Call2					
Zero current		<input checked="" type="radio"/> On <input type="radio"/> Off	<input checked="" type="radio"/> On <input type="radio"/> Off	<input checked="" type="radio"/> On <input type="radio"/> Off	<input checked="" type="radio"/> On <input type="radio"/> Off

GREEN SERIES – OPTIONALS ⁽¹⁾

CANBUS Communication and External Command



- All the chargers of the GREEN Series can be equipped of CANBUS communication to manage the charging process with the battery BMS (Battery Management System).
- Different CANBUS Communication Protocol are available.
- The CANBUS connections can be available, on request, on a connector located on the bottom (GREEN2-GREEN4) or on the left side (GREEN6-GREEN8-GREENX) or on the auxiliary pins of the output connector.
- All the chargers of the GREEN Series can be equipped of External Control Signal.
- The External Control Signal can be programmed to implement the following functionality:
 - Anti-spark,
 - Remote START/STOP,
 - Battery/Kart.
- If the two connections of the External Control Signal are shorted together the charger can provide output current. If the two connections of the External Control Signal are open the charger is unable to provide output current.

GREEN SERIES – OPTIONALS (2)

RTC Board and DIGITAL I/O Board

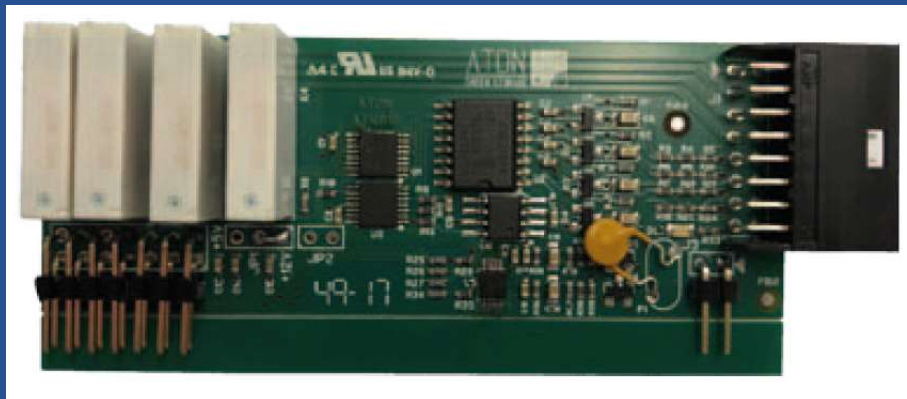


Curva da orario

	CURVE PRE	START TIME	CURVE IN	STOP TIME	CURVE POST
SUNDAY	0 SCHEDULE	01:12	0 SCHEDULE	01:00	0 SCHEDULE
MONDAY	0 SCHEDULE	00:00	0 SCHEDULE	00:00	0 SCHEDULE
TUESDAY	1 1PB ST_01.0001	01:00	0 SCHEDULE	03:44	3 3PB GEL_01.0001
WEDNESDAY	0 SCHEDULE	03:00	1 1PB ST_01.0001	00:00	0 SCHEDULE
THURSDAY	0 SCHEDULE	00:00	0 SCHEDULE	01:00	0 SCHEDULE
FRIDAY	0 SCHEDULE	01:00	0 SCHEDULE	00:00	0 SCHEDULE
SATURDAY	0 SCHEDULE	01:00	0 SCHEDULE	15:25	0 SCHEDULE

Copy all Week 48 SEND Close

- RTC Board allows to the SPE206 Board to manage the real time clock.
- Through the Application HFView it's possible to program the charging process based on the real time clock and implement the opportunity charge.



- DIGITAL I/O Board can be used to implement addition functions as:
 - Reading of external remote signals.
 - Drive external equipment through relay clean contacts.

THANK YOU!

For more information visit our website

www.spechargers.com